

XC6-4517K

TELESCOPIC HANDLER

Main parameter

| Item | XC6-4517K | unit |
|---|---------------------------------|------|
| Gross weight | 13500 | kg |
| Engine power | 82(CUMMINS)/74.9(DDE) | kW |
| Rated load | 4500 | kg |
| Maximum lifting height | 16700 | mm |
| Maximum forward reach | 12600 | mm |
| Effective load at maximum forward reach | 490 | kg |
| Center distance of load | 600 | mm |
| Luffing angle | -4 ~ 73 | ° |
| Fork angle | -90 ~ 18 | ° |
| Maximum traction force | 70 | kN |
| Gradeability | 25 | ° |
| Maximum traveling speed | 36 | km/h |
| Turning radius | 5000 | mm |
| Braking distance | 10 (Initial speed 32 ± 2km/h) | m |
| Overall length | 6960 | mm |
| Overall width | 2500 | mm |
| Overall height | 2850 | mm |
| Wheelbase | 3900 | mm |
| Wheel tread | 2060 | mm |
| Fork length | 1200 | mm |

No further information of sample contents, product structure and configuration parameters updates.
There maybe some difference between sample books and material objects.Please kind prevail.



XCMG Construction Machinery Co., Ltd.

Address: NO.99 North Kunpeng Road, Xuzhou Economic Development Zone, Jiangsu, China 221004
Tel: +86-51687560288 FAX: +86-51683111363 E-mail: sales@xcmg.com Website: http://www.xcmg.com

20170322



| Description | Specification |
|------------------------|---------------|
| Operating weight | 13500kg |
| Rated load | 4500kg |
| Maximum lifting height | 16700mm |
| Maximum traction force | ≥70kN |



XC6-4517K

Product Overview

- XC6-4517K telescopic handler is a representative product of our K series telescopic handlers. This product is equipped with imported Cummins engine of strong and reliable power and imported axles and transmission of stable drive. The full-hydraulic wet brake is applied to ensure driving safety. The four-section telescopic boom structure features flexible operations, accurate forklifting, and automatic leveling, with the maximum lifting height up to 16.7m. It's a multifunctional high-efficiency small-sized construction machinery product.

Characteristics

- The panoramic cab and the XCMG's visual identity appearance design feature good fashion and elegance.
- Powerful international brand engines; Special CARRARO transmissions and axles for smooth drive.
- The international top-level full-hydraulic wet brake system features stable and reliable braking and guarantees driving safety.
- The four-wheel drive and multiple steering modes (including four-wheel, two-wheel, and crab steering modes) realize super-strong off-road capability and adapt to diversified working conditions.
- The frame leveling function equipped (The body is capable of 10° swing in both leftward and rightward directions) realizes powerful site adaptability and meets the needs of diversified working conditions.
- The special overload control system guarantees operation safety and reliability.
- The electrohydraulic proportional control for the working system features accurate, stable, and efficient operations.
- The leading human-machine interaction system and the instrument, monitoring, and alarm system with complete functions provide you energetically with a comfortable, intelligent, and safe operation experience.
- Optional aerial working platform, bucket and various tools to meet customer needs.

Industry position

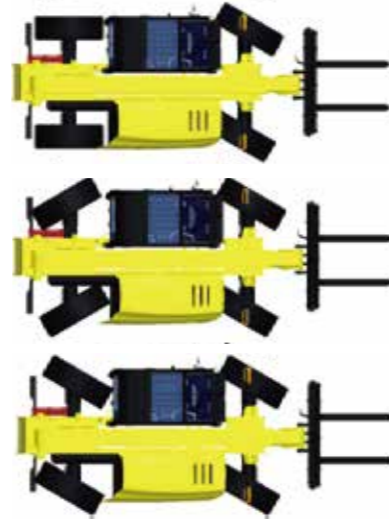
- Business leader of China telescopic handlers.
- Business standards maker of China telescopic handlers.
- Record creator in China's industry.



XC6-4517K

Flexible steering control modes

- Two-wheel steering mode: For common operations and high-speed site transfer.
- Four-wheel steering mode: For operations in narrow spaces.
- Crab steering mode: For operations in slanted narrow spaces.



Comfort drive and easy operation

- Luxury and comfortable cabin with soundproof, thermal insulation, vibration reduction and open visionary.
- Ergonomic joysticks and dashboard layout, suspension seat for operator's easy operations.
- FOPS&ROPS cabin, extinguisher and rescue hammer are equipped to ensure operator's safe operation.

Super strong structure and reliability

- The critical structural parts, such as telescoping boom, are proved by stringent durability test to meet the needs of diversified severe working conditions.



Has passed fatigue load and overload tests of 200,000 times



XC6-4517K

Intelligent technology and high operation safety

- The special overload control system real-time monitors the operation situation and the sound-light alarm and overload safety protection function are provided to ensure high safety and reliability.
- The fork leveling system adopts the automatic flow compensation technology to automatically control the levelness of forks during the luffing of the boom, in order to guarantee the forklifting stability and safety in heights.
- The frame leveling function equipped maintains the levelness of the machine under diversified working conditions, featuring powerful site adaptability and high operation safety.



Convenient maintenances

- With design of side-turning large-opening hood, "one-stop" maintenance can be fulfilled for the engine oil filter, diesel filter, and air filter.
- Parallel integrated fuse box of centered control for easier and effective inspections.



Meets various working conditions



XCMG Telescopic Handlers Celebrate 50th Anniversary of Diplomatic Relations between China and France



XCMG Telescopic Handlers Build Steel Structures Overseas



XCMG telescopic handlers help municipal constructions in Africa



XCMG Telescopic Handlers Build Sugar Refinery in Ethiopia